

Hawkes Bay Rifle Club

Range Standing Orders

1 Shooting range/multi-range site (complex) name
Hawkes Bay Rifle Club Incorporated.
2 Names of individual ranges <i>(if applicable)</i>
Range 1 – 300-600-yard range. Range 2 – 1000-yard range.
3 RSOs date <i>(date RSOs were authorised)</i>
12 November 2024
4 Introduction
Information about the range
4.1 The range is located on Horonui Station at the end of Anderson Rd, Pakipaki. There are two ranges on Horonui Station: <ul style="list-style-type: none"> • Range 1: 300/600-yard centrefire and black powder rifle range; and, • Range 2: 1000-yard centrefire rifle range.
The legal title of the land on which the range is located, and any associated land affected by shooting range <i>(if different)</i>
4.2 Lot 3 D.P.28127
The name of the landowner(s) or controlling authority that approve the use of their land as a shooting range
4.3 Drumpeel Farms Ltd. The farm area is known as Horonui Station.
Hours of operation
4.4 Hours of operation are by prior agreement but generally between 12 pm and 5 pm on Saturdays and 8 am and 1 pm on one Sunday per month.
5 Responsibility
Name of the SRO <i>(who is responsible for the overall safe operation of the range)</i>
5.1 The Shooting Range Operator (SRO) is the Hawkes Bay Rifle Club Inc.
5.2 The Hawkes Bay Rifle Club Committee is responsible for the day-to-day administration, management, and ongoing maintenance of the range.
6 Compliance with Range Standing Orders (RSOs)
6.1 All users of the range are subject to these RSOs.
6.2 Approval to use the range will be withdrawn for any deliberate breach of these RSOs.
7 Range location
7.1 Horonui Station at the end of Anderson Rd, Pakipaki.
NZTM map sheet number and grid reference
7.2 The range is located on Topo Map No. BK 38 Maraekakaho 39.42.21 South and 176.46.11 East (E1923202 N5598094).
8 Approved range users and priority of use
8.1 Hawkes Bay Rifle Club Incorporated.

9 Warning flags and danger signs

9.1 Red range warning flags will be raised at the main gate, and at the 300, 600, and 1000 yard ranges when in use. A safety sign and radio (placed on top of the sign) are positioned outside the cone of fire - see attached Google maps with red range warning flags. There are permanent danger signs around the perimeter of the land.

10 Description of individual ranges, restrictions, and conditions of use (in numerical order)

	Range 1.
Range description:	300/600-yard, Outdoor, Reduced Danger Area range (NRANZ RDA Template applied). A centrefire and black powder rifle range; with firing points at 300 and 600 yards.
Restrictions:	1. Rifles up to and including 8mm caliber with a muzzle velocity no greater than 3140fps and a muzzle energy no greater than 5160j. 2. Black powder (muzzle loading and metallic cartridge) firearms up to and including 0.75in caliber with a muzzle velocity no greater than 2000fps and a muzzle energy no greater than 3000j.
Conditions of use:	1. Range 2 must be closed when Range 1 is in operation. 2. Prone shooting only. 3. The rifle must be supported at the for-end using and butt by a bipod, sandbags, shooting jacket and sling or similar. 4. Rifles may only be loaded when the rifle butt is in the shoulder and the rifle is pointed towards the target. In the case of muzzle loading rifle. 5. The rifle may only be cocked when the rifle butt is in the shoulder and the rifle is pointed towards the target
10.2 Range:	Range 2.
Range description:	1000-yard, Outdoor, Reduced Danger Area range (NZRNZ RDA Template applied). A centrefire rifle range; with a firing point at 1000 yards only.
Restrictions:	1. Rifles up to and including 8mm caliber with a muzzle velocity no greater than 3140fps and a muzzle energy no greater than 5160j.
Conditions of use:	1. Range 1 must be closed when Range 2 is in operation. 2. Prone shooting only. 3. The rifle must be supported at the for-end using and butt by a bipod, sandbags, shooting jacket and sling or similar. 4. The rifle may only be cocked when the rifle butt is in the shoulder and aimed at the target

11 Range safety roles

- 11.1 An Officer on Duty (OD)/Range Officer (RO) must be on duty whenever a range is in use. The RO is to be a person approved by the SRO who holds a firearms license and is appropriately trained in shooting range safety management.
- 11.2 Any other trained Safety Officer as may be necessary or required by match rules.
- 11.3 The name of the OD/RO, time and date to be recorded in the range register for every shooting activity.

12 Range safety rules

1. Ensure the range danger area is clear of any people and activity prior to and during the shooting activity.
2. Safety on the range is the responsibility of all range users.
3. All users of the range have read these RSOs.
4. All users of the range must follow these RSOs.
5. The RO shall wear a Safety Vest to be readily identifiable.
6. Red Range warning flags are in place prior to the shooting activity.
7. The backstop or bullet catcher is in good repair.
8. That only approved or authorised targets are used on the range.
9. Ammunition restrictions are adhered to.
10. Hearing protection, and if necessary, eye protection, shall be worn by all people within 20 meters of the firing point.

- 12.2 Bolts are to be removed from rifles and an Empty Chamber Indicator inserted at all times except when the rifle is on the firing point and the RO grants permission for the shooter to insert the bolt into the rifle's action.
- 12.3 When a rifle is to be removed from the firing point; the bolt must be removed from the action and an Empty Chamber Indicator inserted. The RO or check scorer must check the chamber is clear. The RO or check scorer must check that an Empty Chamber Indicator is inserted into the rifle action before the rifle is removed from the firing point.
- 12.4 The RO shall ensure that at all times loaded rifles are pointed towards the target.

- 12.3 All shooters utilising the range must be able to demonstrate to the satisfaction of the RO that he or she is capable of shooting, to an accuracy standard, to comply with:
1. The cone of fire requirements under section 25; and,
 2. The rifle sights are correctly adjusted for the range used.

13 New ammunition use

- 13.1 If a new type of ammunition is proposed for use on the range, it must be approved for use by the SRO. Before inclusion in the RSOs, the requirements of section 34 of these orders are to be adhered to.

14 Targets

- 14.1 Only soft paper or core-board targets shall be used for centrefire and black powder rifles in accordance with the Police Shooting Range Manual or a recognised National Shooting Range Manual:
- All targets will be placed as close as possible to the bullet catcher/backstop.
- 14.2 Targets shall be placed as close as practicable to the centre of the 1800mm x 1800mm target boards. On ranges 1 and 2 NРАНZ paper targets will be used in conjunction with an electronic target shot recording device.

Approved target centre heights

- 14.3 The approved target centre height for Ranges 1 and 2 is 900mm.

The procedure for approval and use of new targets

- 14.4 New targets shall be approved by the SRO prior to use.

15 Steel targets

- 15.1 Not permitted.

16 Moving targets

- 16.1 Not permitted.

17 Minimum safe engagement distances

- 17.1 **Range 1:** 300yds; soft paper or core-board target; a series of heavy plastic drums filled with rubber chip as bullet catcher and behind the bullet catcher is a near vertical dirt bank.
- 17.2 **Range 2:** 1000 yards due to topography; soft paper or core-board target; a series of heavy plastic drums filled with rubber chip as bullet catcher and behind the bullet catcher is a vertical dirt bank.

18 Eye and hearing protection

- 18.1 All range users shall wear hearing protection, at all times. Eye protection is recommended where appropriate.
- 18.2 Hearing protection, and if necessary, eye protection, shall be worn by all people within 20 meters of the firing point.

19 Medical and emergency

- 19.1 A first aid kit is stored in the target shed and shall be taken to the firing point during a shooting event.
- 19.2 The first aid kit shall be checked regularly and replenished when used or expired - whichever comes first.
- 19.3 In a medical emergency dial 111 and ask for ambulance assistance: address is Horonui Station at the end of Anderson Rd, Paki Paki; and,
- 19.4 A club member will be dispatched to the gate at the range entrance to direct the ambulance and medical staff.
- 19.5 Cell phone is the appropriate method of quickly contacting emergency services.

20 Accident/incident procedure

- 20.1 **Accident/incident not involving a firearm or ammunition:** In the event of an accident/incident that does not involve a firearm or ammunition on a range during live firing, the following is to occur:
- All shooting is to cease immediately.
 - All firearms that are in use must be made safe / unloaded.
 - Ensure that immediate first aid is provided and assess the need for evacuation of the casualty to the nearest medical facility or onsite recovery by emergency services.
 - Notify the SRO/Club President.
 - Record the accident / incident details in the range incident register.
- 20.2 **Accident/incident involving a firearm or ammunition:** In the event of an accident/incident involving a firearm or ammunition on a range during live firing, that results in serious injury or death, the following is to occur:
- All shooting is to cease immediately.
 - All firearms that are in use must be made safe / unloaded.
 - Ensure that immediate first aid is provided and assess the need for evacuation of the casualty to the nearest medical facility or onsite recovery by emergency services.
 - Notify the Police.
 - Notify the SRO/Club President.
 - Record the accident / incident details in the range incident register.
- 20.3 **In addition to the above (in 20.2), the following procedure shall be followed:**
- Leave the firearm or ammunition in situ;
 - Do not touch, remove, or interfere with the firearm or ammunition in anyway.
 - Immediately notify Police.
 - Identify a suitable witness (the RO) to remain to assist Police.

21 Fire precautions and procedures

21.1 In the case of fire, the following is to occur:

1. All shooting is to cease immediately.
2. All firearms that are in use must be made safe / unloaded.
3. Attempt to extinguish the fire if safe to do so. If there is ANY doubt, evacuate the range and call 111, ask for the fire service.
4. If required, the RO is to direct that all range users evacuate the range via the main gate if safe to do so. The RO is to ensure all occupants of the range are evacuated and accounted for.
5. Notify the Emergency Fire Services.
6. Notify the SRO.
7. Notify the landowner.

21.2 A fire extinguisher is located in the target shed which shall be taken to the firing point.

21.3 No open fires are permitted.

22 Range clearance

Describe the procedure for clearance of the range at the completion of the shooting activity

22.1 All range users shall insure that:

1. All range rubbish, including used target, ammunition boxes and fired cases, removed from the range, and disposed of in an appropriate manner.
2. All unwanted fired cases shall be placed in the bins provided.
3. No rubbish is to be left on the range.

23 Unauthorised access and/or use of the range

Describe the procedure for the managing any unauthorised access and/or use of the range

23.1 Any individual or organisation given use of the range requires written authority from the SRO. Any individual or organisation unable to provide proof of authority will be asked to leave the range immediately. Any refusal to leave should be reported to the NZ Police and the SRO as soon as possible.

Range intrusion Procedure

23.2 When a range is in use for live firing, it is the responsibility of all persons on the range that if any people or vehicles are seen to enter or are about to enter the active range area and/or it's danger area, they are required to shout 'STOP', and all shooting is to stop immediately. Only when the intrusion is clear may live firing resume under the instruction of the RO.

24 Range design cone(s) of fire (Coff)

24.1

Fullbore (centrefire) and Black Powder Cone of Cone					
		Total Coff (mils)		Total Coff (metres)	
	Range	Elevation	Azimuth	Elevation	Azimuth
1	300	+3 -5.95	+/- 31.25	+ 0.82m - 1.63m	+/- 8.57m
2	600	+3 - 3.56	+/- 21.62	+ 1.65m -1.95m	+/- 11.86m
3	1000	+3 - 3.33	+/- 26.81	+ 2.74m -3.04m	+/- 24.51m

25 Inability of the shooter to achieve cone of fire

25.1 **Range 1:** The cone of fire listed above is the safe dimension for the use of this range. It is expected that all shooters using range 1, firing competently aimed shots, should be able to consistently hit within the 1.8m x 1.8m target area at all firing distances. If a shot fails to strike the target area the following procedure shall occur:

Identify the shooter responsible.

- a. The OD/RO must examine the shooter's rifle by checking that the sights are correctly set and/or to bore sight if possible.
- b. The OD/RO must observe the next shot and if it falls within the target; the shooter will be allowed to continue shooting.
- c. If the observed shot does not fall within the target area; the shooter shall be provided with a suitable coach with the intention of bringing in the next round on target.
- d. Shooters who are unable to repeatedly fire shots onto the target area shall be prevented from further firing.
- e. Shooters who are prevented from further firing must demonstrate that he or she can achieve a suitable level of accuracy at the shortest firing distance possible before he or she is able to resume firing.

25.2. **Range 2:** The above procedure shall be followed if any shots fall outside the cone of fire.

26 Unlicensed of inexperienced shooters

26.1 All new shooters shall first fire from 300yds on Range 1.

An experienced coach approved by the RO must be on the firing point beside the new or inexperienced shooter. The rifle must be fully supported front and rear by a bipod and/or sandbags. The coach shall control the ammunition, the loading and unloading of the rifle.

27 Test firing

27.1 Test firing of rifles or ammunition can only be done with the approval of the SRO, and conducted under the direction of an OD/RO. If a test rig is used for bench testing ammunition, targets must be aligned so that all shots fall within the confines of the bullet catchers.

28 Air danger height (ADH)

28.1 The ADH is 500ft (150m).

28.2 When a range is in use for live firing, it is the responsibility of all persons on the range that if an aircraft is seen to enter or about to enter the range and its danger area, they are required to shout 'STOP', and all shooting is to stop immediately. Only when the intrusion is clear may live firing resume under the instruction of the RO.

29 Range maintenance plan

29.1 **Ranges 1 and 2:** The plastic drum bullet catchers behind each target shall be inspected at the end of each shoot for damage that may result in loss of rubber chip. The plastic drums will be replaced when required. The rubber chip from the previous plastic drum will be used to fill the replacement plastic drum. No shooting will occur on the target until the affected plastic drum is replaced.

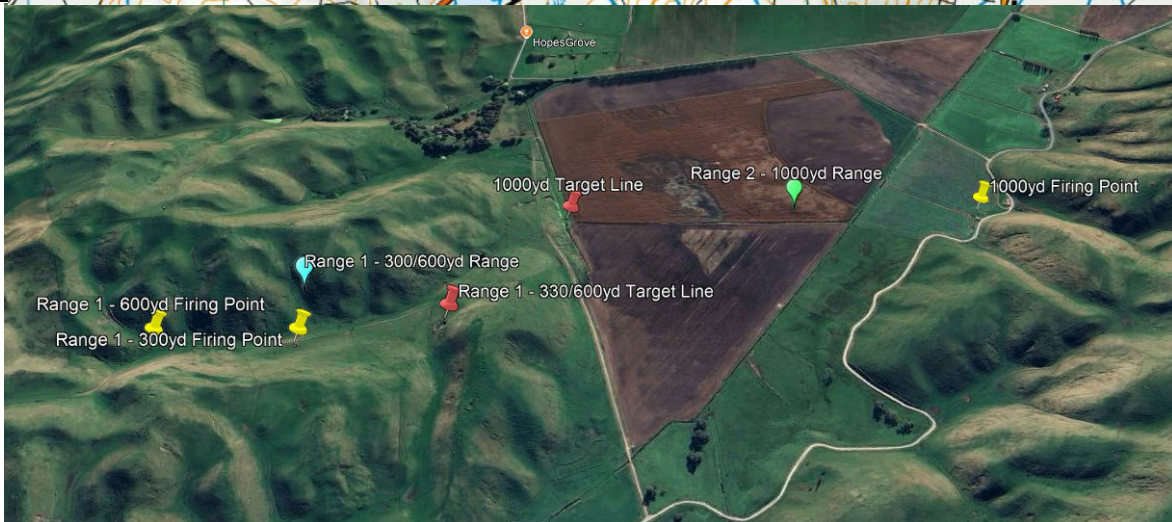
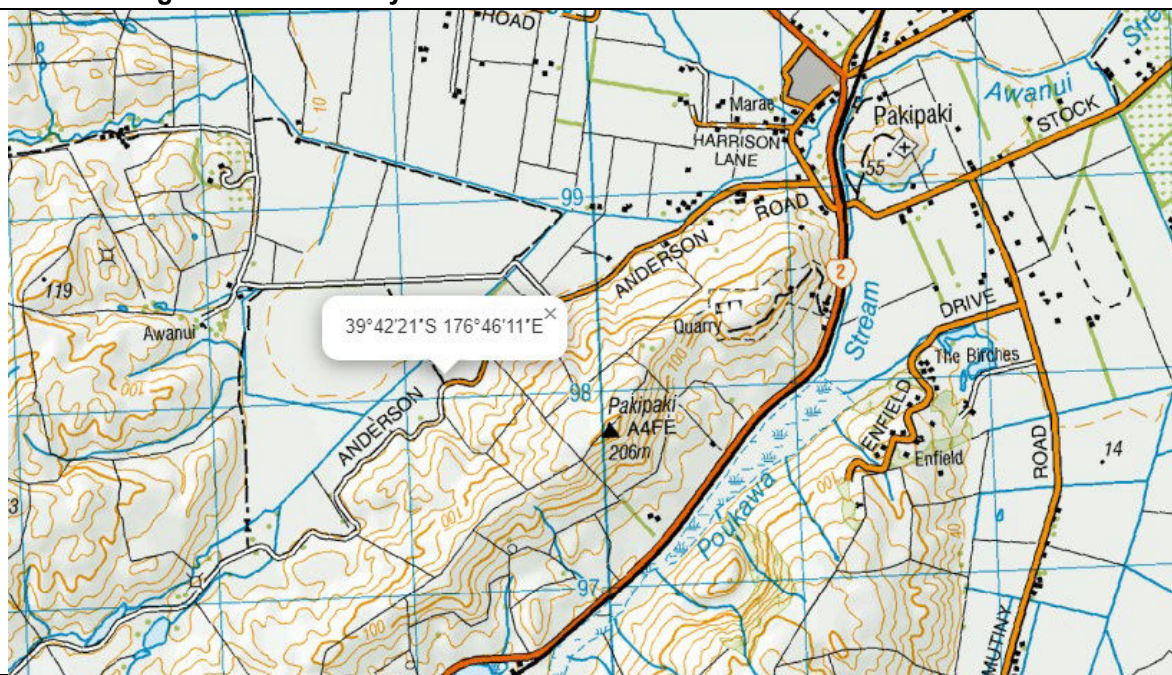
29.2 PPE will be used during the replacement process (i.e. gloves, dust mask, overalls).

29.3 Inspections of the firing point, bullet catcher/backstop/target line prior to and at the end of each range session are to be done to ensure all range structures are in good order.

29.4 Repairs, if required, shall be made as soon as possible. Should a repair of the firing point be required for safety reasons, that firing point shall not be used until the repair is carried out.

30 Children (minors)
30.1 All children are to be under the direct supervision of an adult at all times.
31 Health and hygiene
31.1 Personal hygiene is the user's responsibility. For example, after shooting hands to be washed prior to consuming food or drink.
31.2 Hand sanitiser will be available at the firing point during all events.
31.3 PPE shall be used when maintenance is carried out on the bullet catchers.
32 Domestic animals
32.1 Domestic animals will only be permitted on the range with the approval of the RO.
33 Additional headings
33.1 N/A.
34 Amendment to RSOs
34.1 The SRO must review and approve any proposed amendment. If approved, the SRO is to submit the amendment to the Clubs and Ranges Team at Te Tari Pūreke - Firearms Safety Authority for review. If approved, the SRO can include the amendment in the RSOs with a new effective date and distribute accordingly. All previous copies of the RSOs are no longer valid.
35 Authorisation of RSOs
35.1 These RSOs have been authorised by the Hawkes Bay Rifle Club Inc.
36 Distribution list
36.1 Hawkes Bay Rifle Club Inc.
37 Annexes <i>(if required to supplement the main body)</i>
A. Range location and layout
B. Range danger area

Annex A: Range Location and layout



600yd Firing point



300yd Firing point



Range 1 – Target line



1000yd Firing point

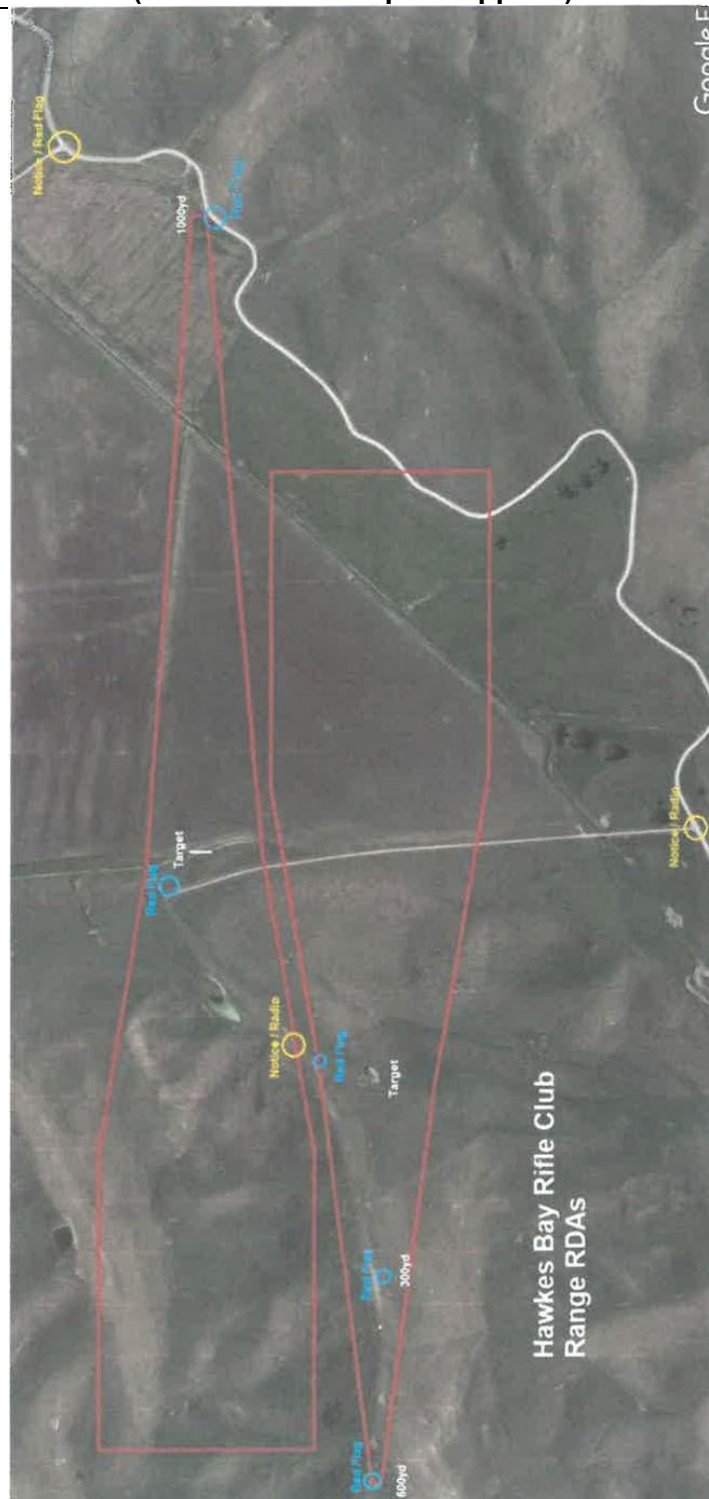


Noise reduction shrouds



Range 2 – Target line

**Annex B: Hawkes Bay Rifle Club Reduced Range Danger Areas for Range 1 and 2.
(NRANZ RDA Template applied)**



Range 1: Targets 39.42.21 South/ 176.45.03 East.
Firing Points: a. 300 yards 39.42.33 south / 176.45.03 East.
 b. 600 yards 39.42.33 South / 176.44.51 East.

Range 2: Targets 39.42.23 South / 176.45.27 East.
Firing point: 1000 yards 39.42.28 south / 176.46.05 East.